

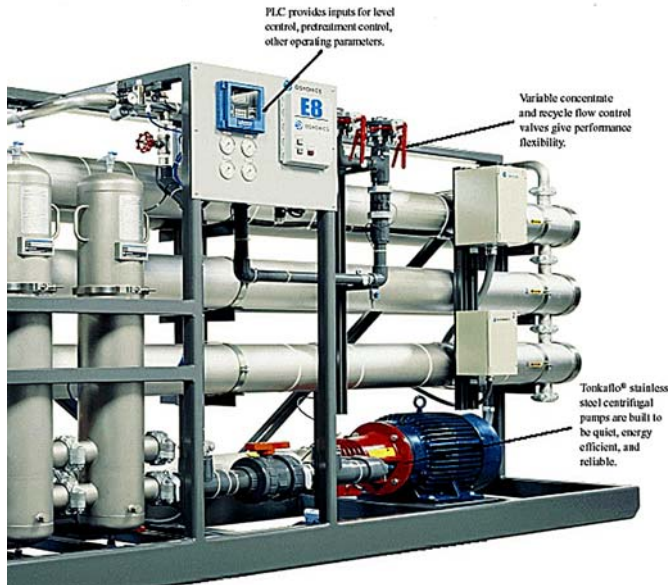
Projects - Machinery - Engineering - Process Automation and Controls

**160 MW Combined Cycle Power generation**



The project consists of 2 gas fired GE turbines, a 2 HRSG Boilers and an Alstom steam turbine

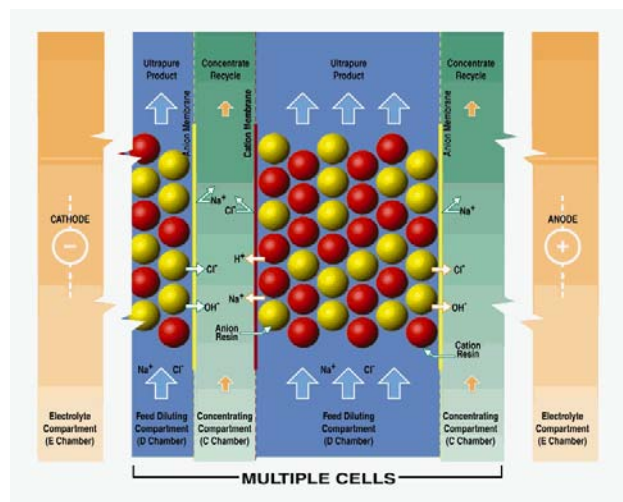
Our scope of work is an ultra-pure water system to treat municipal water from a surface lake , and a high pressure Boiler continuous blowdown neutralizer and recovery system



**GE E8 - RO skid**

The location in a scarce water resource area puts a premium in fresh water costs and emphasizes the need to maximize water recovery and minimize waste

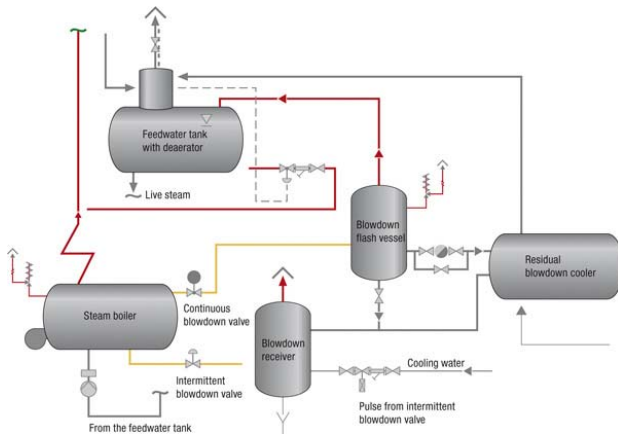
To optimize results, we designed a pre treatment system with resins to remove hardness, followed by a high efficiency two-pass reverse osmosis system, followed by a E-cell EDI electro deionization system and a membrane degassing unit with vacuum pump. A series high precision, high pressure metering pumps are also provided to optimize boiler water control



**GE E-cell electro deionization system**

**Projects - Machinery - Engineering - Process Automation and Controls**

The continuous blow down controlled discharges into a flash tank, and from there it is fed into a neutralization system with high precision metering pumps intercooler and static mixers, followed by a reverse osmosis treatment stage

**Easy Access HMI Interface**

The entire system is highly automated with electronic controls and careful selection of best instrumentation for continuous process monitoring and alarm surveillance from a remote control room.



A very modern and complete analytical laboratory is also provided to ensure constant process quality monitoring and raw materials inspection.

